

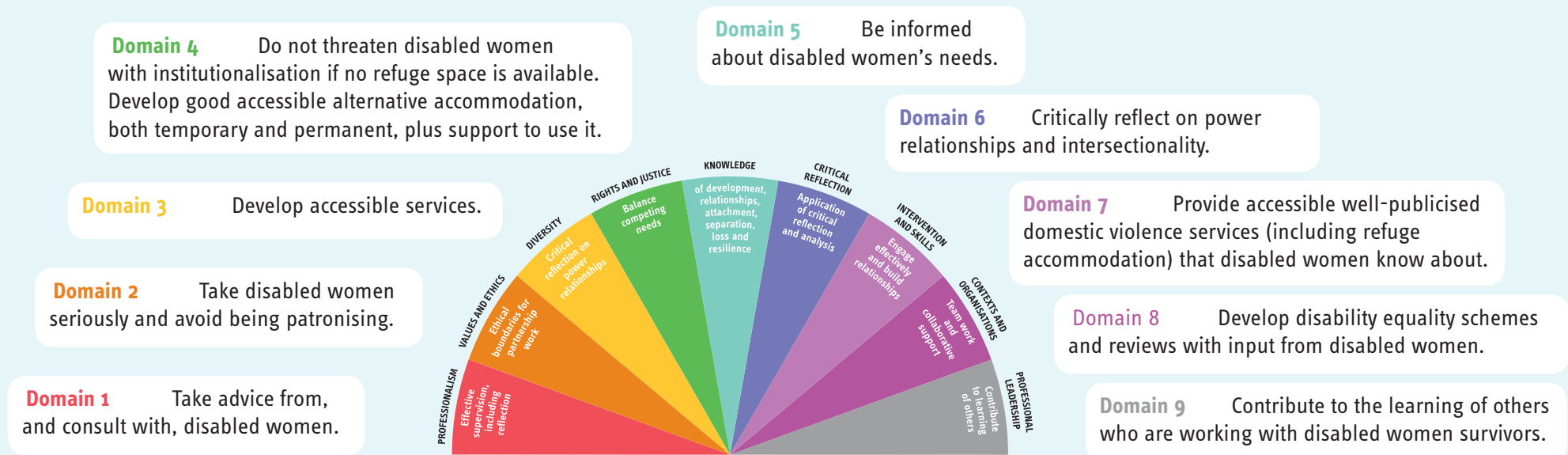


Case study four: Maria

Tool 2 - Social Work Capabilities in Working with Disabled Women Survivors

This tool is based on the recommendations drawn from disabled women's suggestions for improvement in practice in Hague et al's paper 'Making the Links' (2014: 26).

We have mapped the women's seven suggestions to the domains of the Professional Capabilities Framework, and added our own suggestions on domains 6 and 9.



Based on capabilities developed by The College of Social Work

Hague, G et al (2008) *Making The Links; disabled women and domestic violence*. Bristol: Women's Aid.